



heartland2060

Regional Vision

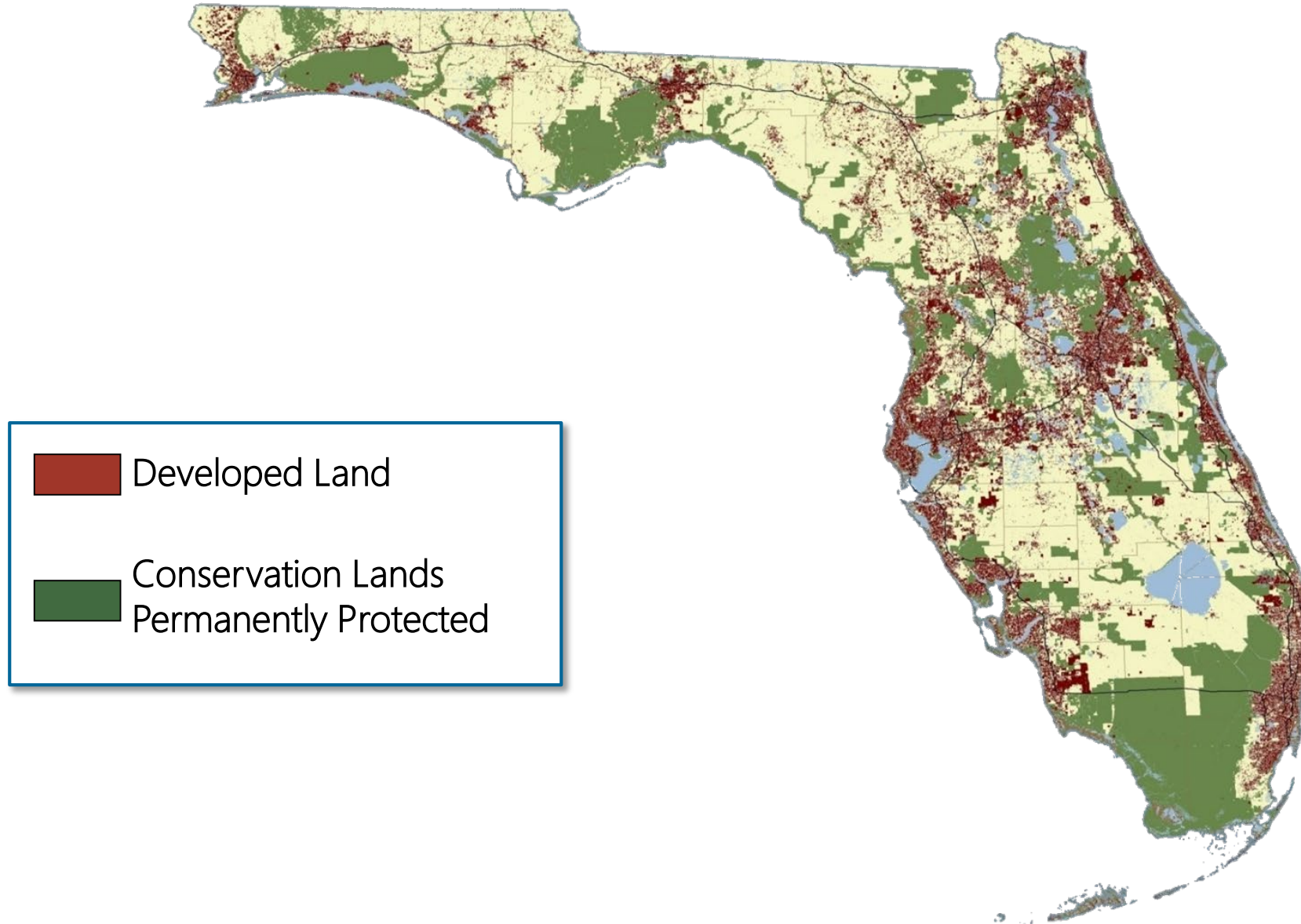
Pat Steed

Executive Director

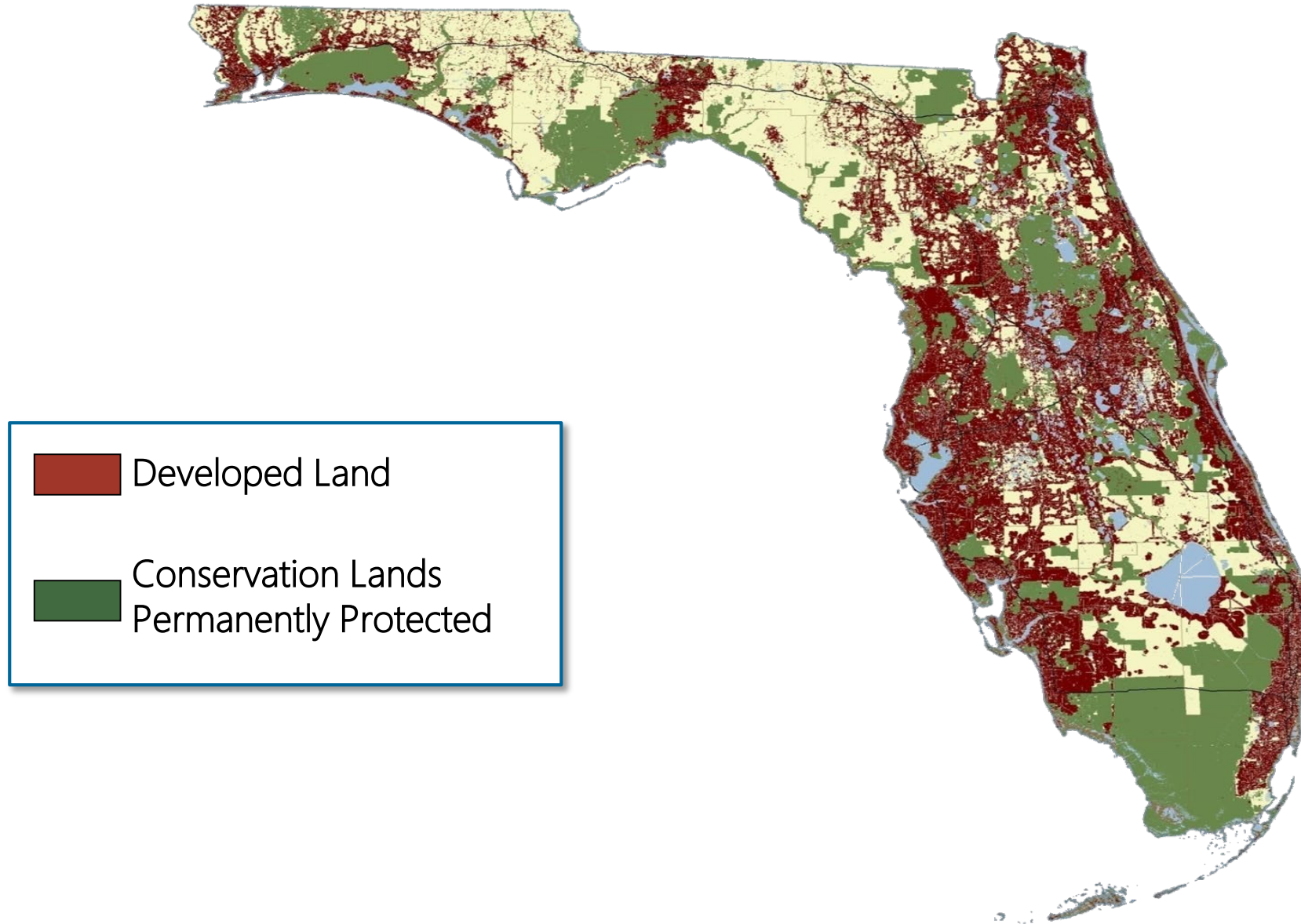
Central Florida Regional Planning Council



2005 Developed Lands and Permanent Conservation Lands

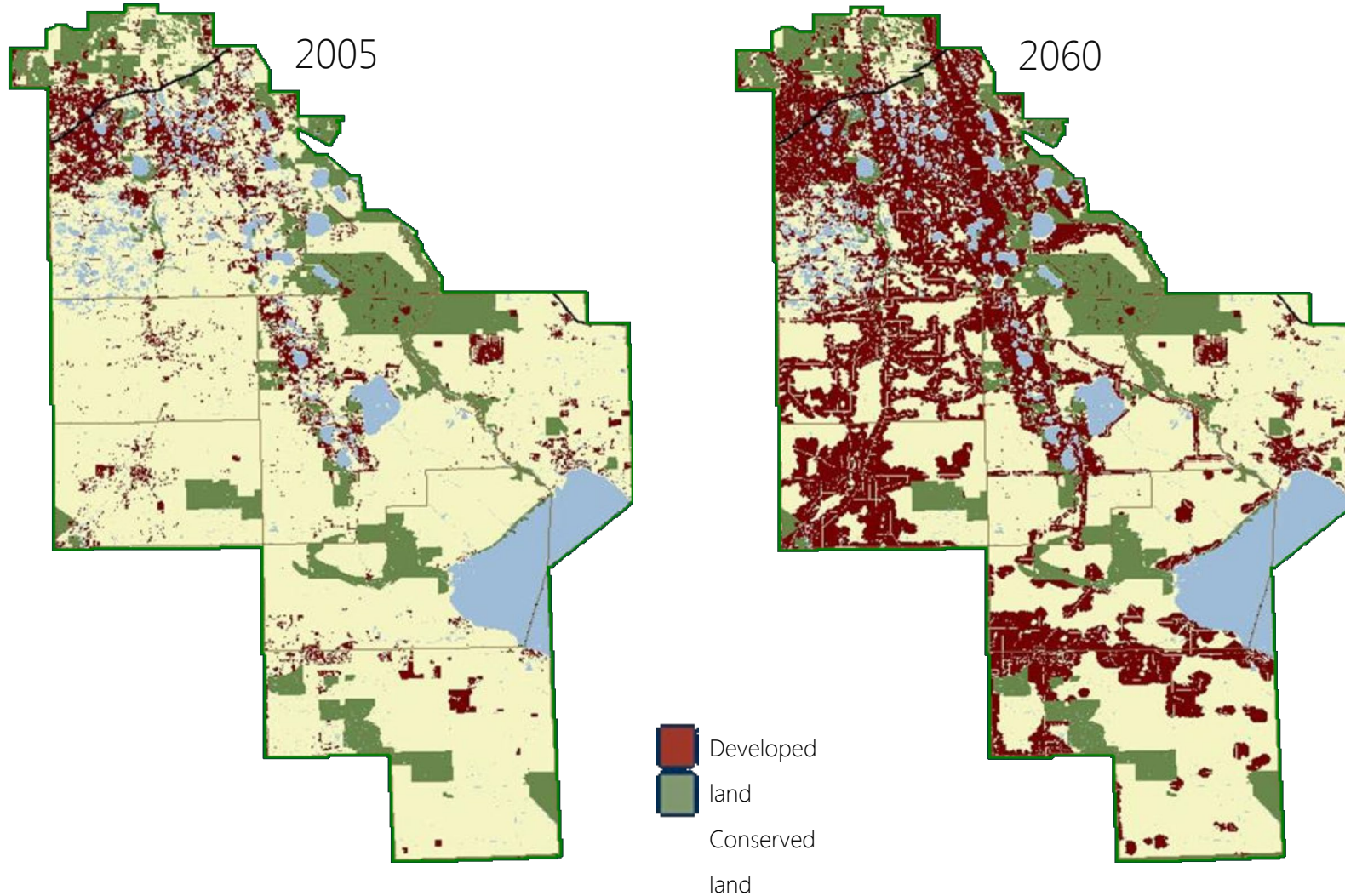


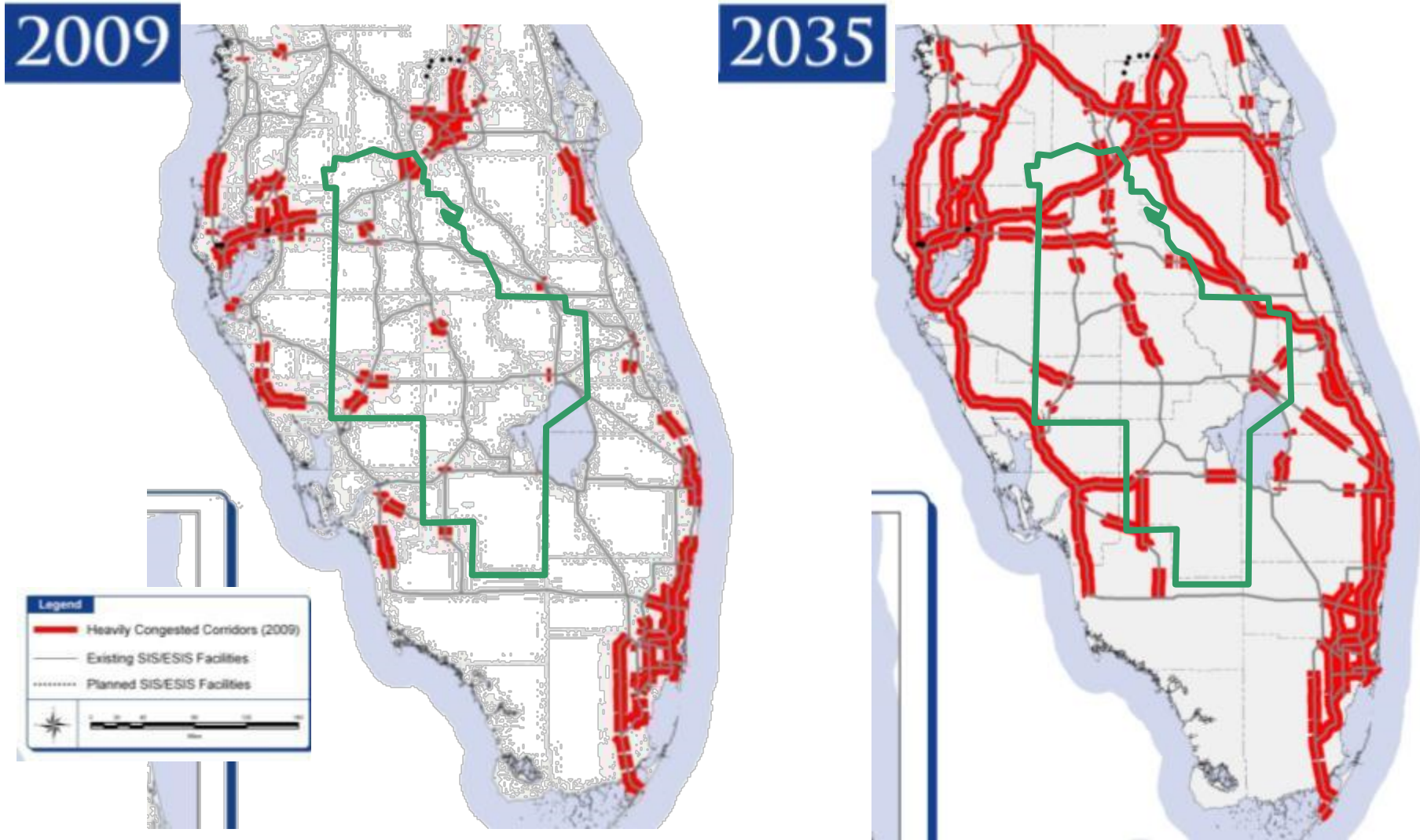
2060 Developed Lands and Permanent Conservation Lands



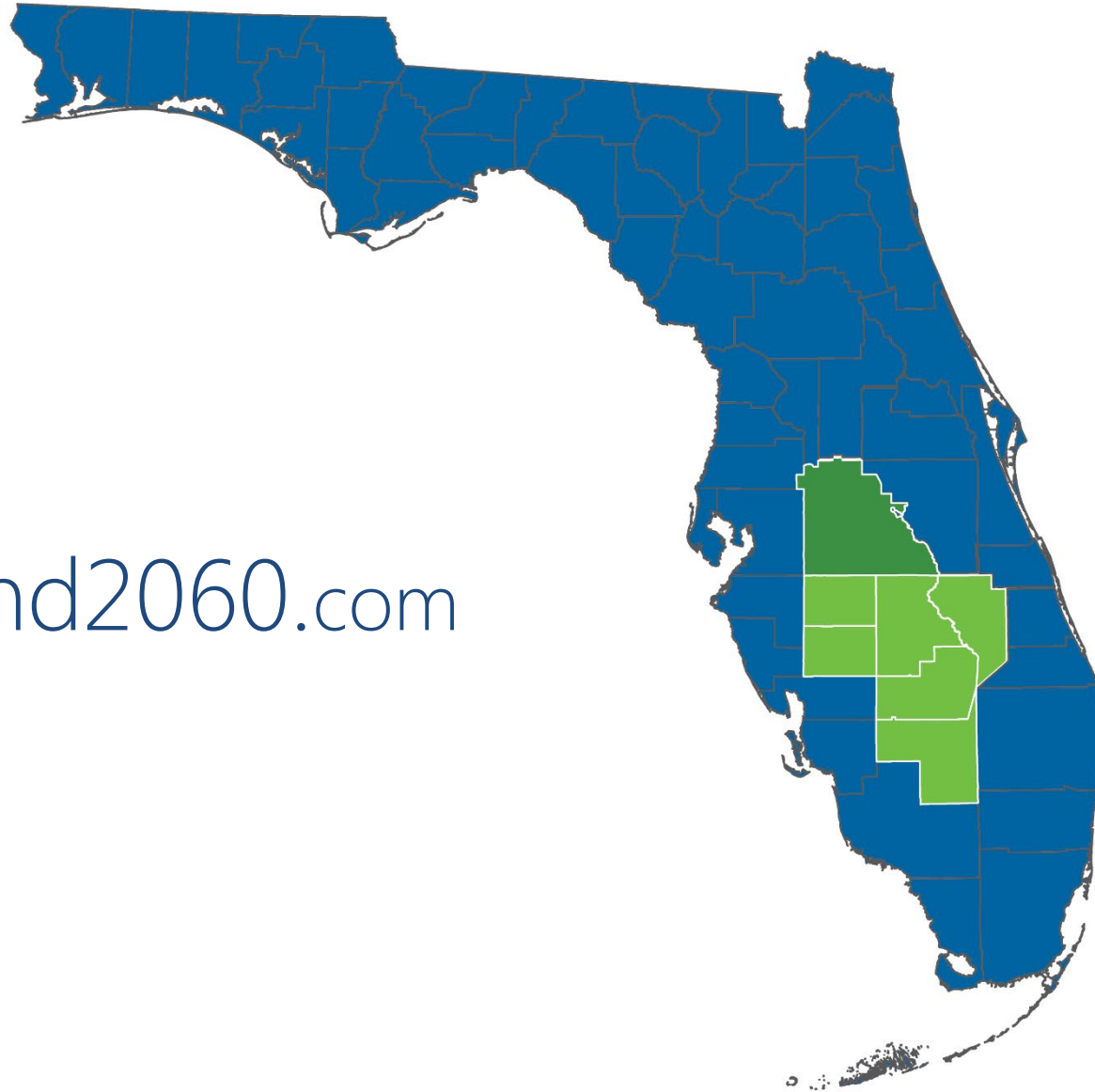
Geographic Area	Population				Population Growth Rate, 2000 to 2010
	1980	1990	2000	2010	
DeSoto	19,039	23,865	32,209	34,862	8.2%
Glades	5,992	7,591	10,576	12,884	21.8%
Hardee	20,357	19,499	26,938	27,731	2.9%
Hendry	18,599	25,773	36,210	39,140	8.1%
Highlands	47,526	68,432	87,366	98,786	13.1%
Okeechobee	20,264	29,627	35,910	39,996	11.4%
Polk	321,652	405,382	483,924	602,095	24.4%
7-County Total	453,429	580,169	713,133	855,494	20.0%
Florida	9,746,961	12,938,071	15,982,824	18,801,310	17.6%
United States	226,545,805	248,709,873	281,421,906	308,745,538	9.7%

Where Will Our Future Take Us?





Heartland2060.com





Our Heartland Values



Our Water Resources





Our Communities



Future for Our Children

heartland2060



Education, Workforce, and Economic Development



Economic Diversification

Infrastructure to Support
Diversified Economy

Early Learning, K-16,
Lifelong Education

Environment and Natural Resources



Water

Sustainable and Viable
Natural Systems

Agriculture

Energy/Climate

Transportation & Land Use



Integrating with
Natural Resources Planning

Supporting Economic
Development

Ensuring Multimodal Connectivity

Enhancing and Creating
Sustainable Communities

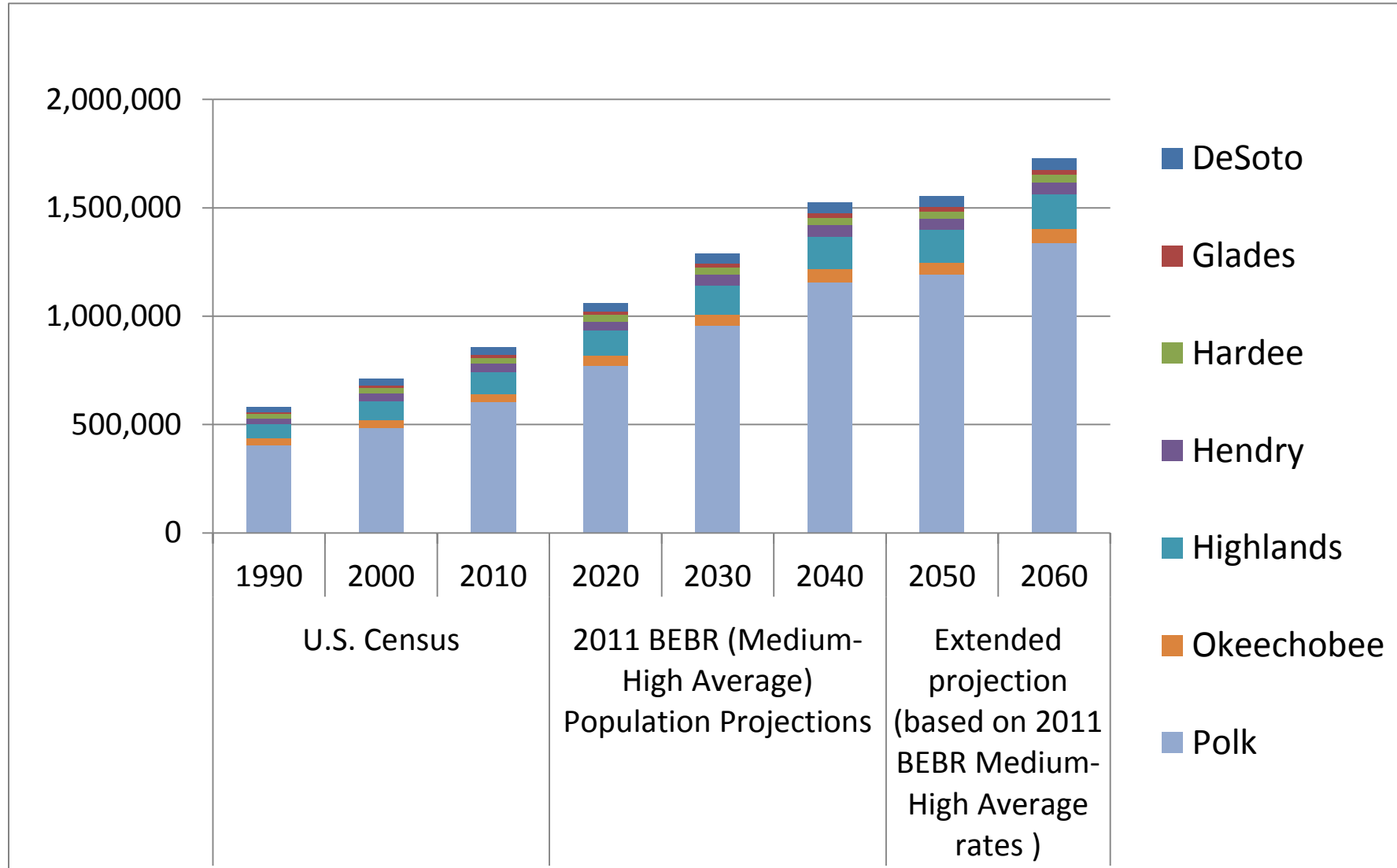
Community Resources



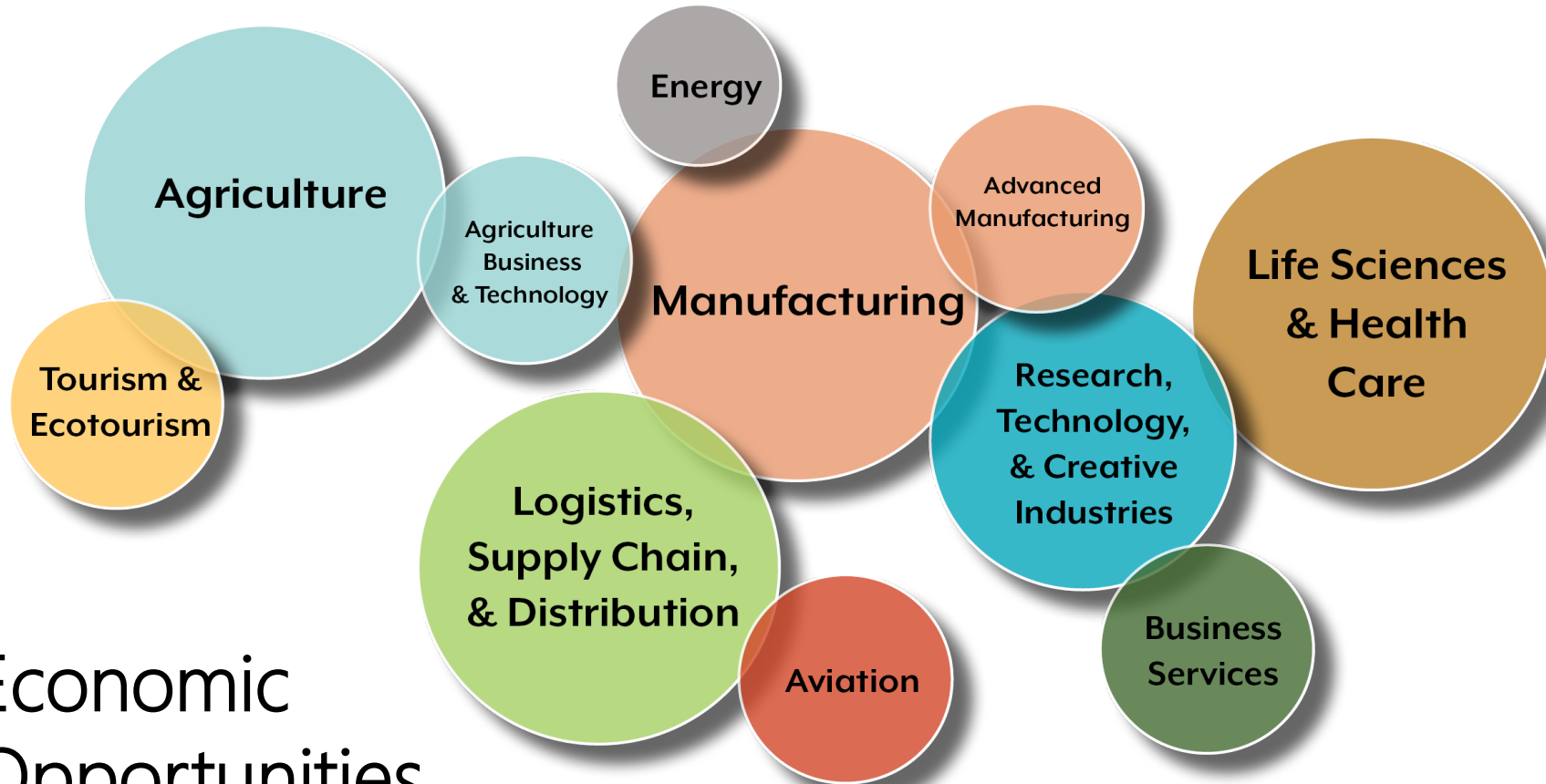
Health Care

Cultural Identity

Population Counts and Projections



Where we could be going...



Economic
Opportunities
(from the CEDS)

Regional Economic Engines as “Futures”

A future that... Resembles the Present.

"If we continue with business-as-usual, including healthcare, natural resources, and ecotourism, then we can expect our future to look like..."



- Following current and historical trends in:
 - population
 - employment
 - land use
- Continuing economic prominence of agriculture, healthcare, mining, warehousing, ecotourism, and service industries

A future that is... Focused on Energy.

"If we focus on supplying technologies and goods that create energy and become energy exporters, then we can expect our future to look like..."



- Developing an alternative fuels industry based on agriculture
- Manufacturing and installing renewable energy technologies
- Using high-tech energy technologies to become an energy exporter
- Energy efficiency and conservation technologies

A future that is... **Making & Moving Goods.**

"If we focus on employment hubs for manufacturing, transportation, and warehousing, then we can expect our future to look like..."



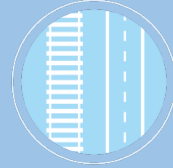
- Using current and future industrial areas and logistics and trade networks
- Maintaining high capacity transportation networks for moving goods
- Enhancing distribution of air cargo
- Connecting ports
- Establishing advanced manufacturing and warehousing facilities

Topic areas:

- Balance in urban land uses and conservation land uses
- Transportation systems prevent fragmentation of natural systems
- Infrastructure supports sustainable agriculture
- Land use supports a sustainable economy and a sustainable environment
- Creating multimodal corridors
- Connecting the Heartland with other regions
- Moving freight by rail, roads, and air
- Moving people by rail, roads, and transit

Task Force:

Transportation & Land Use



Key Issues:

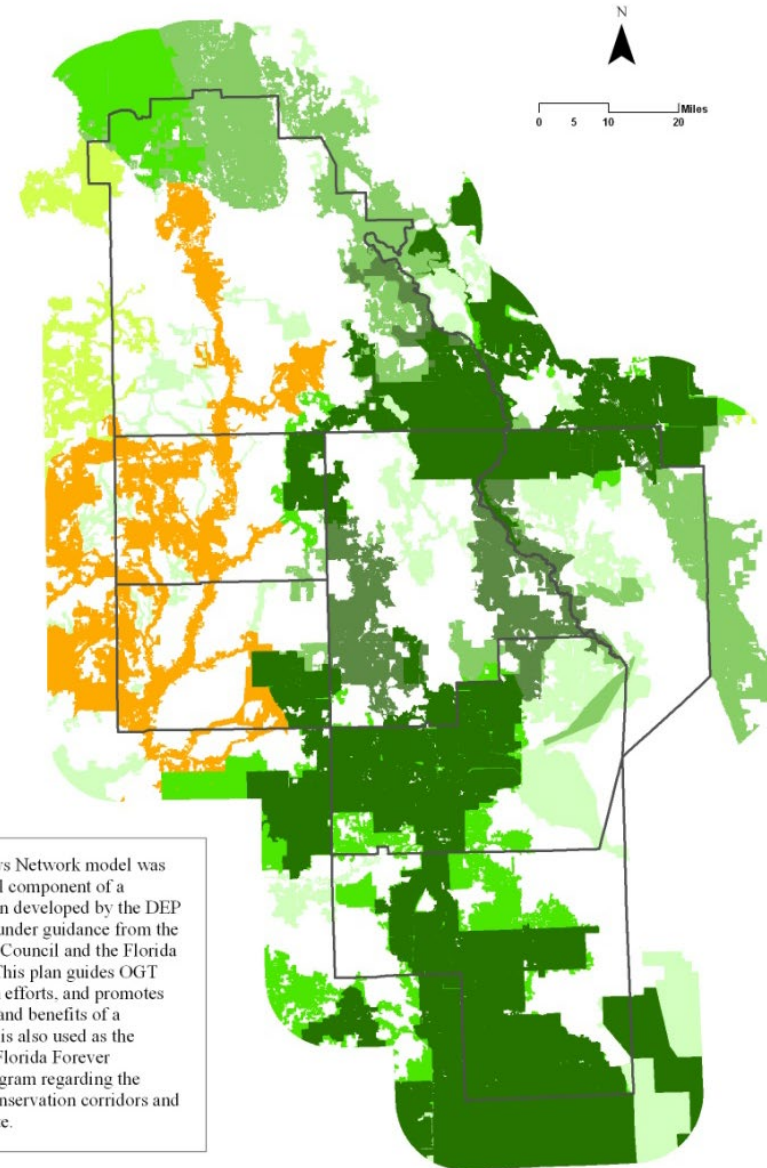
- Integrating with Natural Resources Planning
- Supporting Economic Development
- Ensuring Multimodal Connectivity
- Enhancing and Creating Sustainable Communities

Topic areas:

- Land use to support 2060 economy
- Moving people to support 2060 economy
- Moving goods to support 2060 economy
- Linking transportation and land use to support 2060 economy
- Promoting energy efficient land use patterns
- Supporting redevelopment
- Housing affordability and sense of place within established communities
- Improvements to serve the needs of new communities

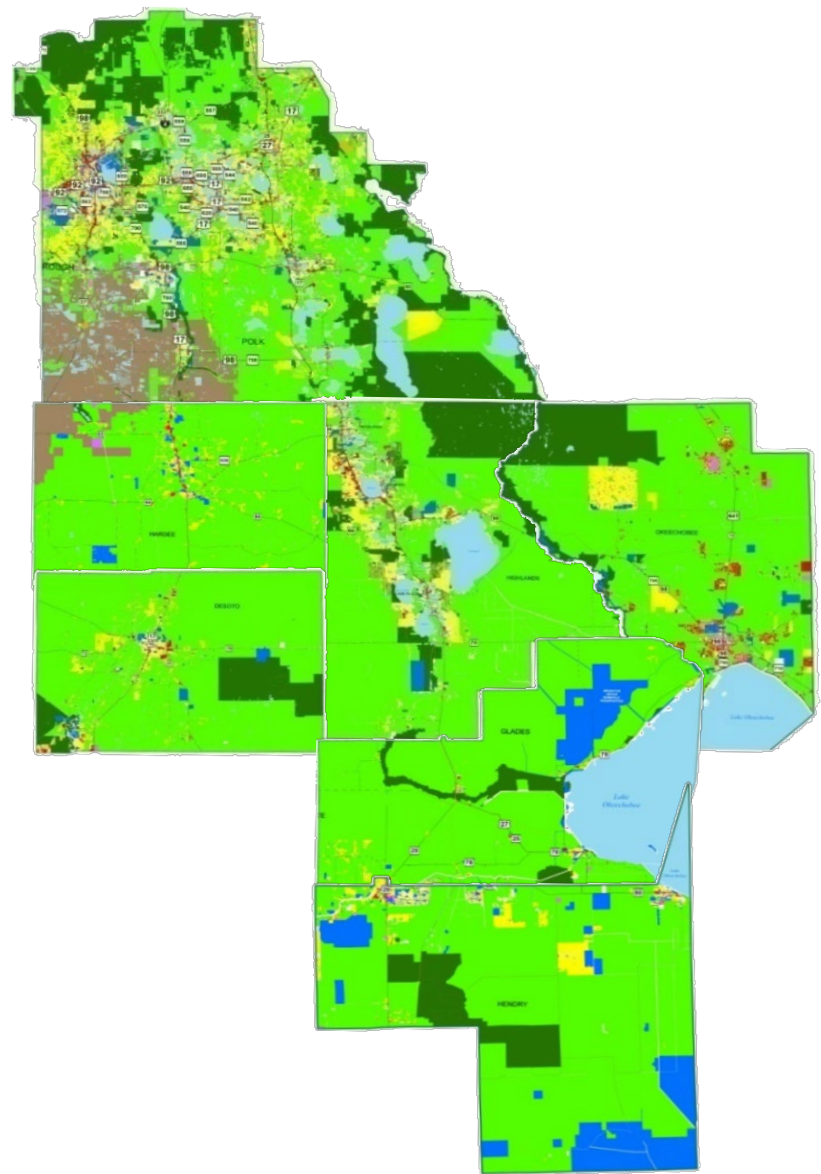
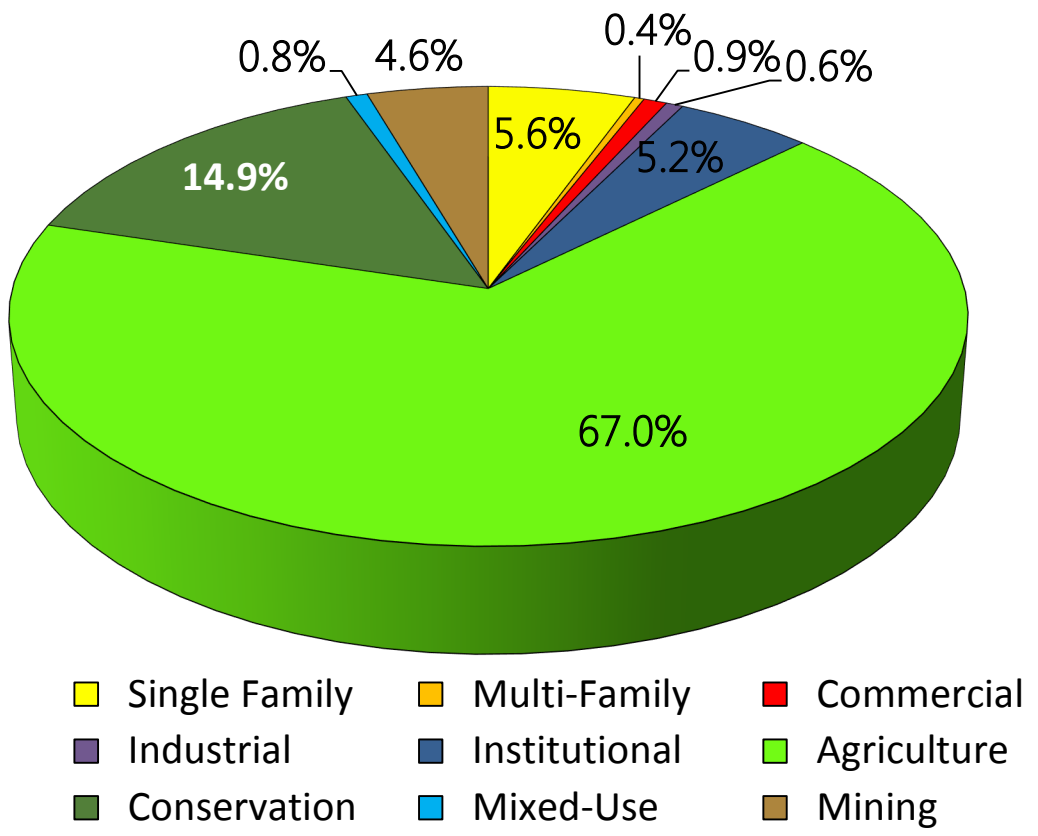
Florida's Ecological Greenways Across the Heartland

Ecological Greenways

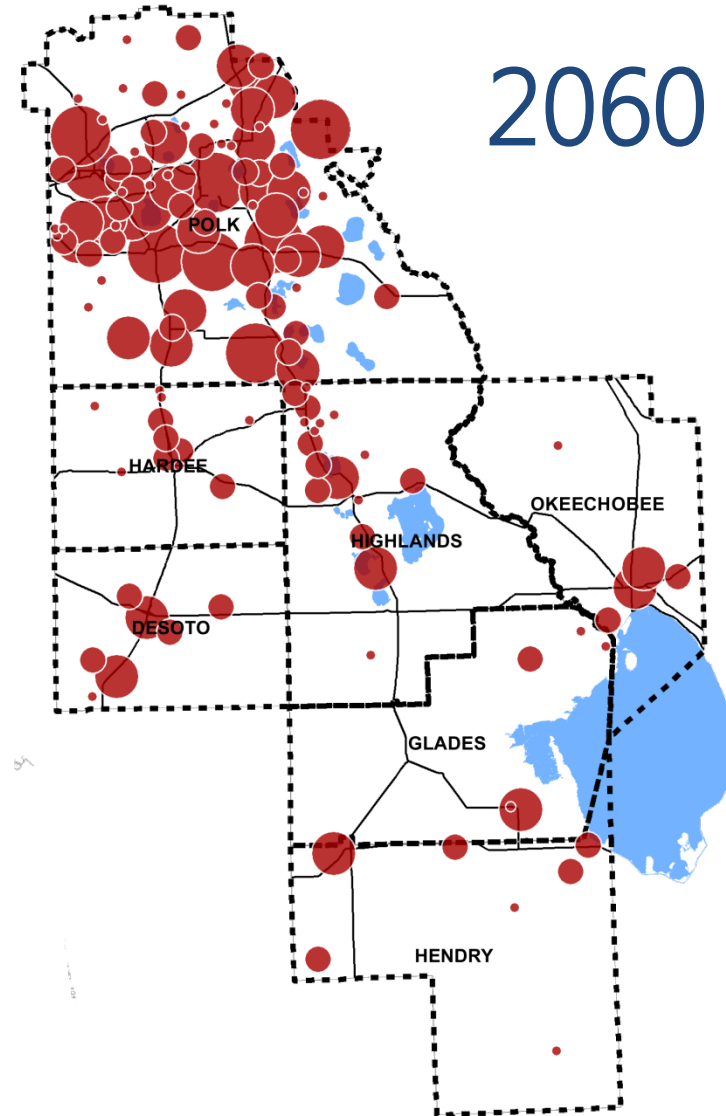
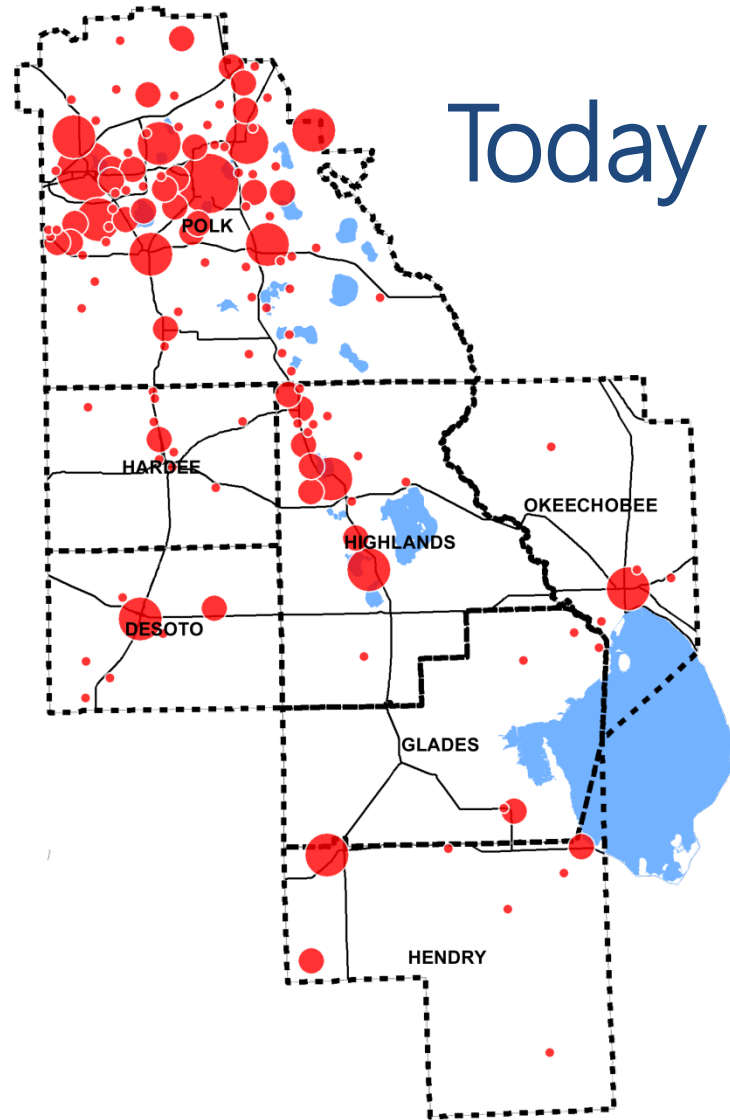


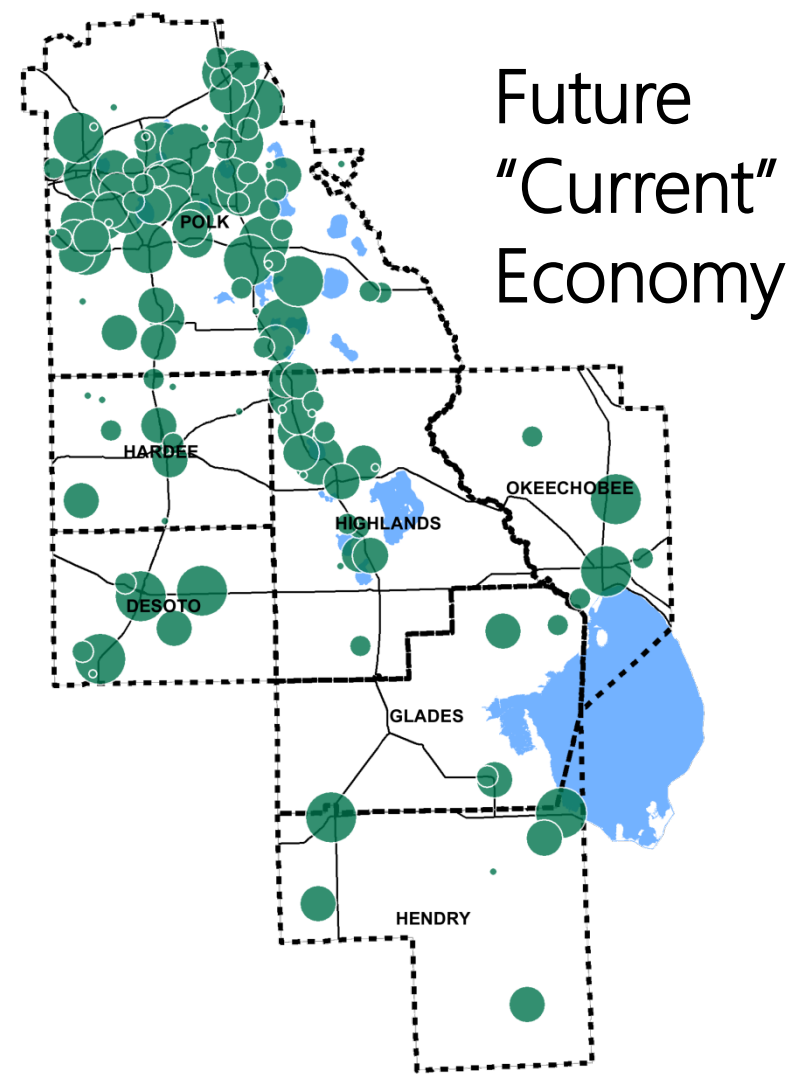
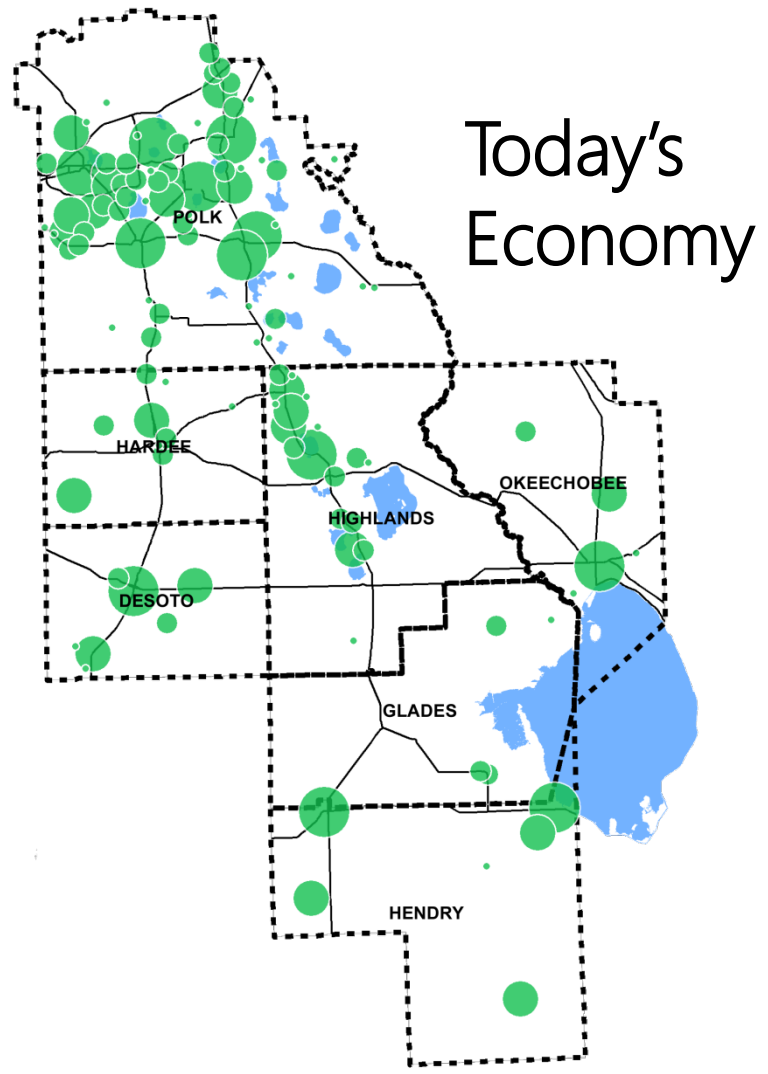
The Florida Ecological Greenways Network model was created to delineate the ecological component of a Statewide Greenways System plan developed by the DEP Office of Greenways and Trails, under guidance from the Florida Greenways Coordinating Council and the Florida Greenways and Trails Council. This plan guides OGT land acquisition and conservation efforts, and promotes public awareness of the need for and benefits of a statewide greenways network. It is also used as the primary data layer to inform the Florida Forever conservation land acquisition program regarding the location of the most important conservation corridors and large, intact landscapes in the state.

Existing Land Uses

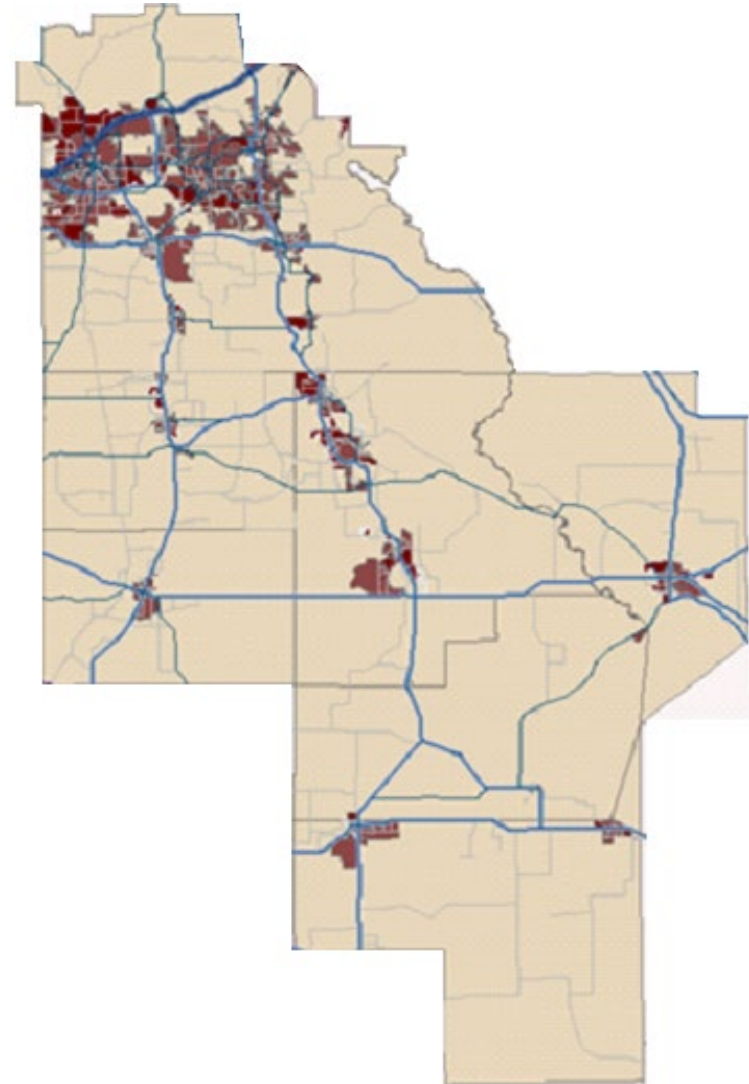


Projected 2060 Population





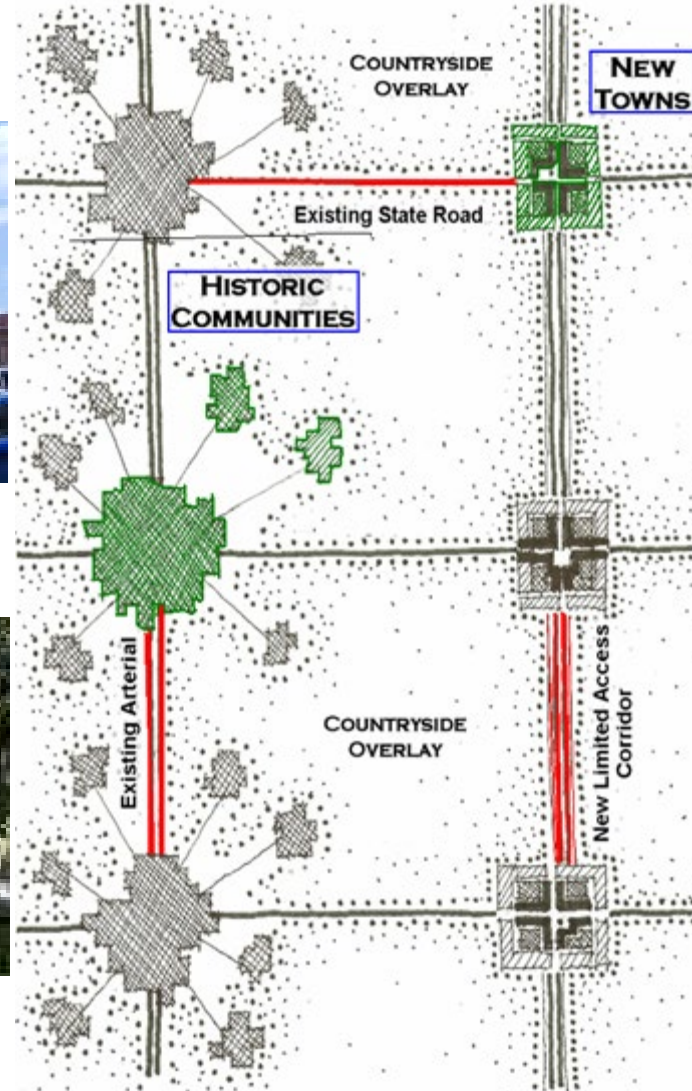
- Connections between growth and development and transportation access
- Planning land use and transportation to sustain viable natural systems
- Enhancing mobility while preserving community character
- Linking visioning to land use and transportation planning



Economic Diversity



Cultural Heritage



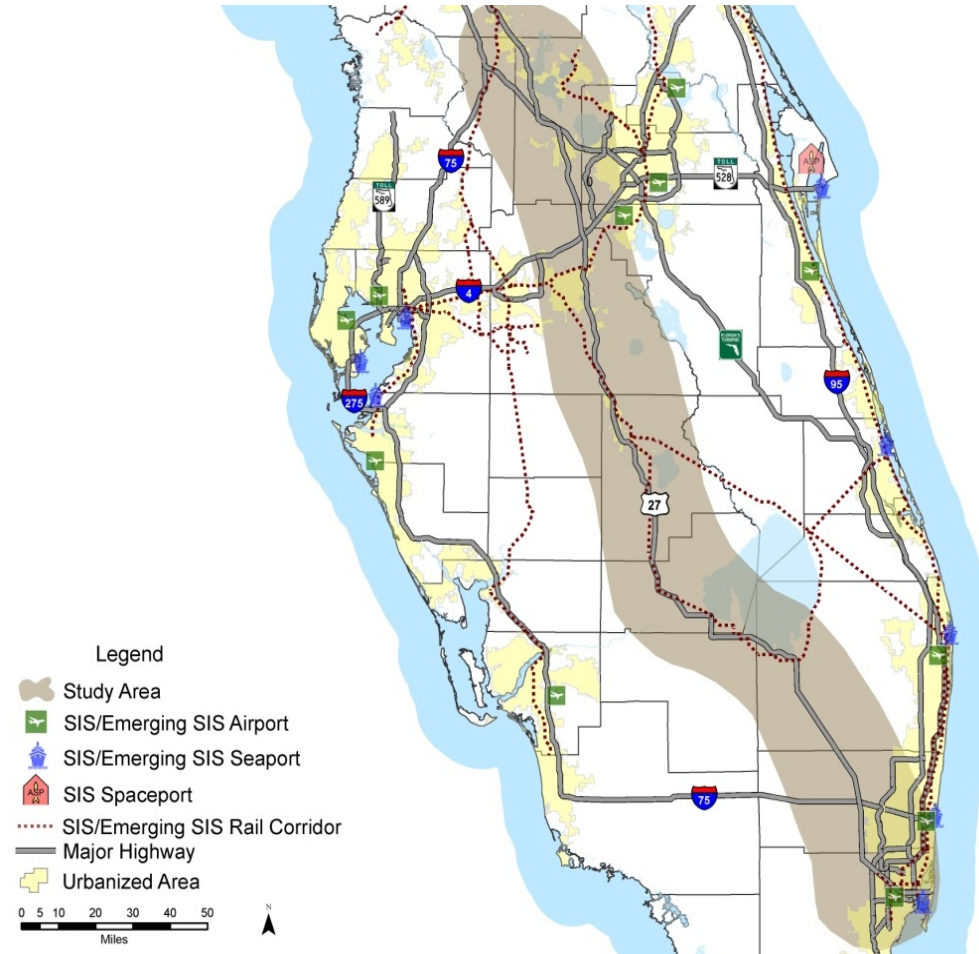
Multi-Modal Connectivity



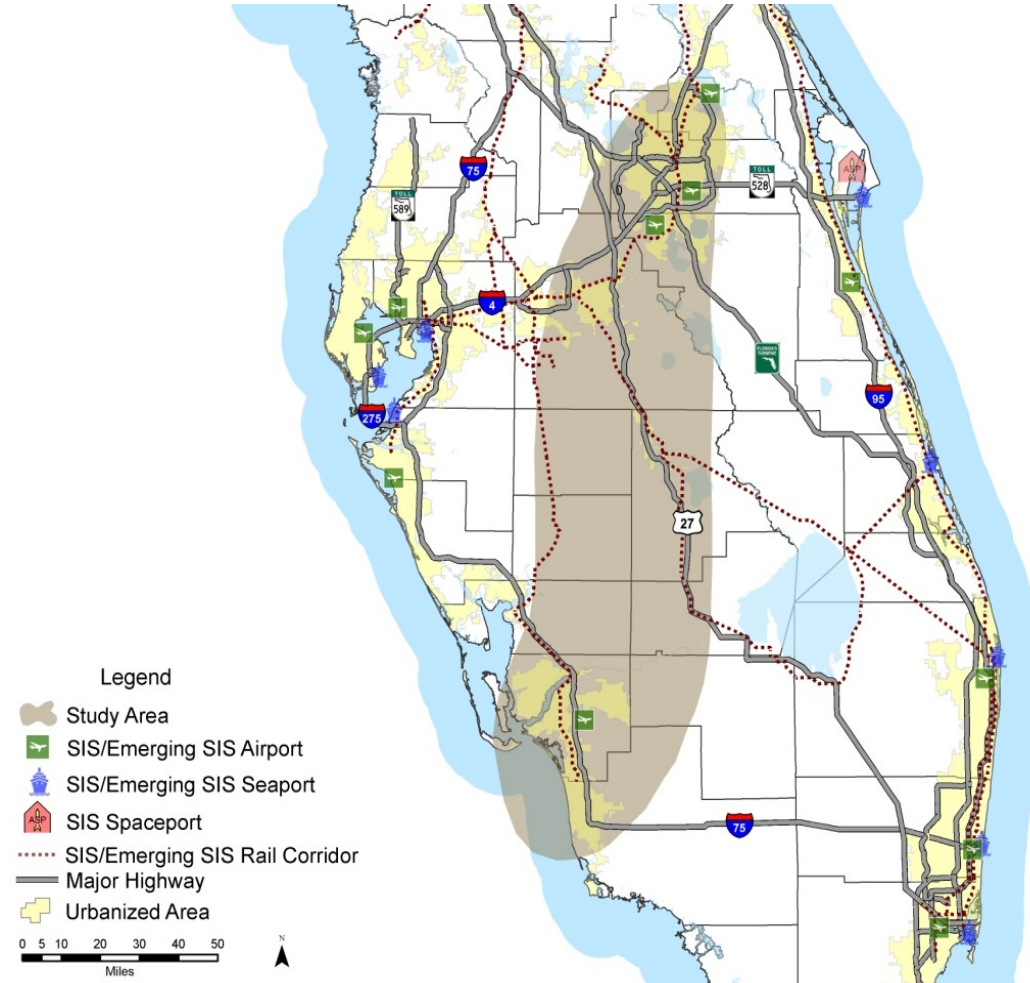
Natural Resource Protection



- Potential for increased freight flows from Southeast Florida seaports and connections to proposed intermodal logistics centers
- **US 27** alternatives options include truck-only lanes, freight rail service, express lanes, etc.
- Heartland 2060 regional vision will help guide future decisions about US 27



- Examine need for more direct connection between Southwest, Central Florida
- Potential future need to provide alternative to I-75 for people and freight
- Heartland 2060 regional vision will help guide decisions about future growth, development, and corridors



- Revitalize rural communities, encourage job creation, and provide regional connectivity while leveraging technology, enhancing quality of life and public safety, and protecting the environment and natural resources (SB7068/HB7113)
- From Heartland 2060:
 - Transportation systems that serve regional connectivity while maintaining mobility and community character in established cities and towns along new or expanding corridors
 - Multi-modal corridors which encourage a variety of modes of travel for people and goods
 - Corridors which avoid disruption of natural resources and key habitat areas
 - Corridors which mitigate unavoidable impacts with emphasis on improving the impacted resources
 - Corridors which minimize the proliferation of utility corridors requiring new easements



heartland2060

Regional Vision

Pat Steed

Executive Director

Central Florida Regional Planning Council

